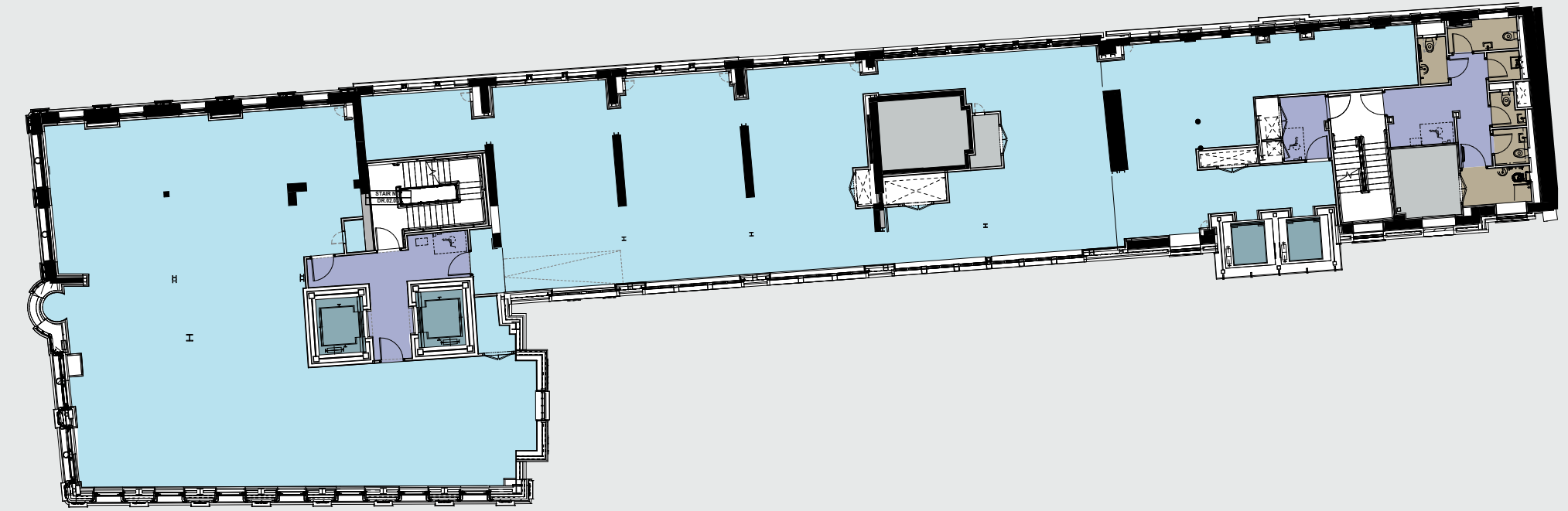


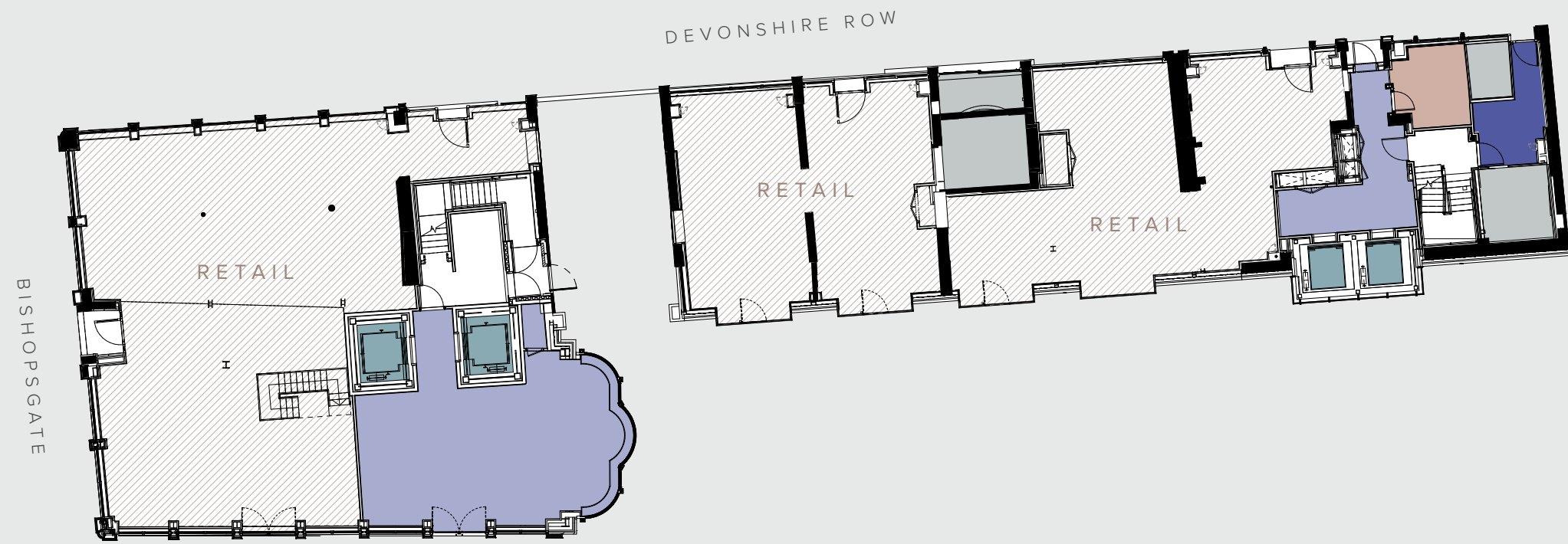
LIGHT-FILLED FLOORPLATES FROM 5,587 TO 11,206 SQ FT

- Office
- Entrance
- Bike Store
- Lift
- Toilets
- Core

SECOND
5,587 SQ FT | 519 SQ M

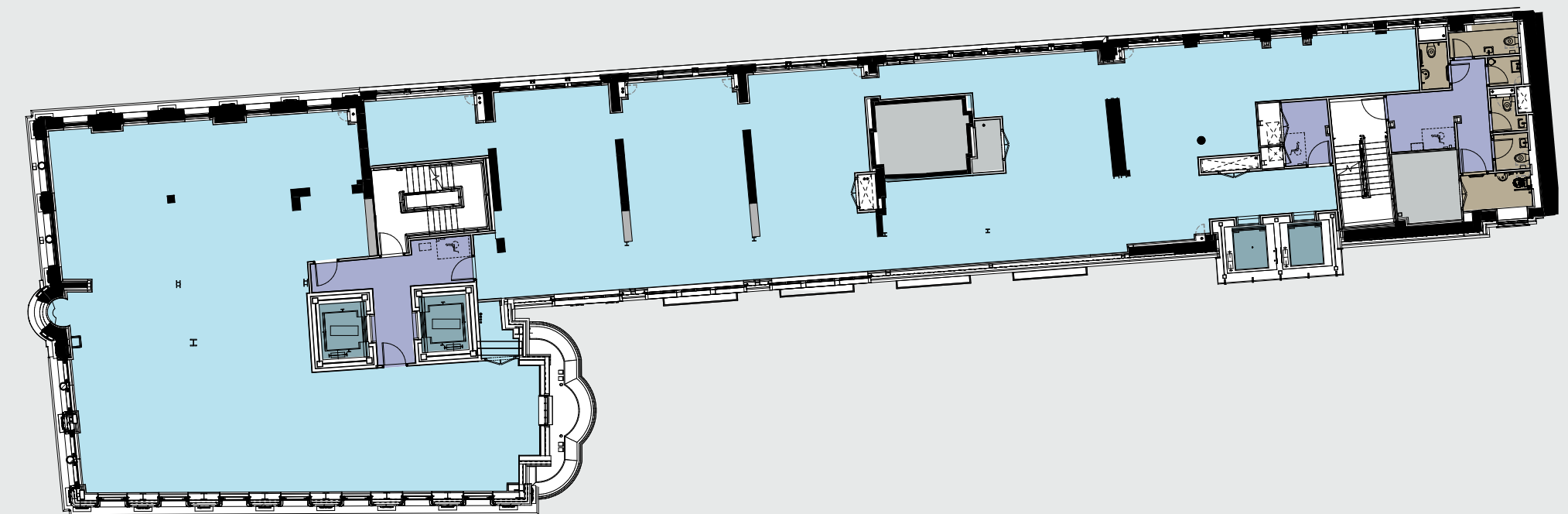


GROUND



ONE BISHOPSGATE PLAZA

FIRST
5,619 SQ FT | 522 SQ M



ONE BISHOPSGATE PLAZA



Floor areas to be measured on completion of the works. Plans not to scale. Indicative only.